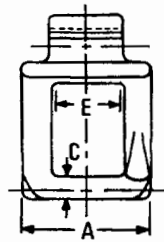
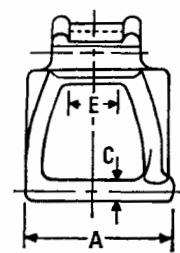
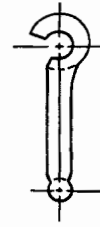


Conveying DETACHABLE CHAIN



Style A



Style B



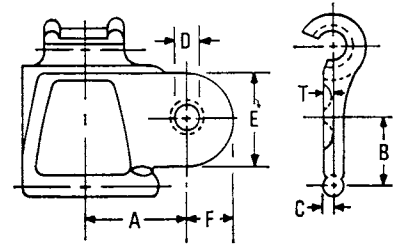
AMERICAN PATTERN

Chain Number	Style	Nominal dimensions			Maximum sprocket face E	No. of links in 10 ft	Average ultimate strength lb	Average net weight lb/ft
		Pitch	Width A	Diameter of crossbar C				
		in	in	in	in			
32	A	1.154	$\frac{3}{8}$	$\frac{1}{16}$	$\frac{1}{2}$	104	1100	0.32
33	A	1.394	$1\frac{1}{32}$	$\frac{1}{16}$	$\frac{1}{2}$	86	1200	0.32
34	A	1.398	$1\frac{3}{32}$	$\frac{7}{16}$	$\frac{1}{2}$	86	1300	0.40
42	A	1.375	$1\frac{3}{32}$	$\frac{3}{16}$	$\frac{5}{8}$	88	1600	0.55
45	A	1.630	$1\frac{1}{2}$	$\frac{3}{16}$	$\frac{11}{16}$	74	1700	0.52
48	A	2.000	$1\frac{1}{2}$	$\frac{3}{16}$	$\frac{11}{16}$	60	1600	0.53
50	A	1.380	$1\frac{1}{32}$	$\frac{1}{16}$	$\frac{5}{8}$	87	1900	0.71
51	A	1.155	$1\frac{3}{32}$	$\frac{1}{16}$	$\frac{7}{16}$	104	1900	0.70
S.51	A	1.136	$1\frac{1}{16}$	$\frac{1}{16}$	$\frac{7}{16}$	105	1900	0.76
52	A	1.506	$1\frac{1}{32}$	$\frac{1}{16}$	$\frac{5}{8}$	80	2300	0.80
52½	A	1.506	$1\frac{1}{32}$	$\frac{1}{16}$	$\frac{5}{8}$	80	2260	0.73
052	A	1.516	$1\frac{1}{8}$	$\frac{1}{16}$	$\frac{3}{4}$	79	2300	0.95
55	A	1.631	$1\frac{1}{16}$	$\frac{1}{16}$	$\frac{11}{16}$	74	2300	0.70
57	A	2.308	$1\frac{1}{16}$	$\frac{1}{16}$	$\frac{3}{4}$	52	2900	0.87
62	A	1.654	$1\frac{3}{16}$	$\frac{7}{16}$	$\frac{11}{16}$	73	3200	1.04
67	B	2.308	$1\frac{5}{16}$	$\frac{7}{16}$	$\frac{11}{16}$	52	3400	1.15
72	A	2.043	$1\frac{3}{16}$	$\frac{3}{16}$	$\frac{11}{16}$	59	4240	1.60
072	B	1.654	$2\frac{7}{16}$	$\frac{3}{16}$	1	73	4340	1.95
72½	B	1.654	$2\frac{7}{16}$	$\frac{3}{16}$	$\frac{7}{8}$	73	4590	2.00
072½	B	1.674	$2\frac{1}{2}$	$\frac{3}{16}$	$\frac{11}{16}$	72	4300	1.95
75	A	2.609	$1\frac{3}{16}$	$\frac{1}{16}$	$\frac{11}{16}$	46	4100	1.34
76½	A	2.073	$1\frac{1}{8}$	$\frac{3}{16}$	$\frac{11}{16}$	58	3890	1.50
77	B	2.297	$2\frac{7}{16}$	$\frac{3}{16}$	$\frac{11}{16}$	52	3600	1.45
78	B	2.609	$2\frac{7}{16}$	$\frac{3}{16}$	$\frac{11}{16}$	46	5500	1.86
83	B	4.000	$3\frac{3}{32}$	$\frac{1}{16}$	$1\frac{1}{16}$	30	4950	1.90
85	B	4.000	$4\frac{3}{32}$	$\frac{1}{16}$	$2\frac{1}{2}$	30	7800	2.47
88	B	2.609	$2\frac{3}{16}$	$\frac{1}{16}$	$\frac{11}{16}$	46	6400	2.30
95	B	3.967	$4\frac{1}{2}$	$\frac{7}{16}$	2	30	9000	2.90
103	B	3.075	$3\frac{1}{2}$	$\frac{3}{16}$	$1\frac{1}{2}$	39	10000	4.00
108	B	4.720	$4\frac{1}{16}$	$\frac{3}{16}$	$2\frac{3}{8}$	$25\frac{1}{2}$	10000	3.48
114	B	3.250	$3\frac{7}{16}$	$\frac{3}{16}$	$1\frac{1}{2}$	37	12000	5.25
124	B	4.063	$4\frac{3}{32}$	$\frac{3}{16}$	$1\frac{1}{2}$	30	17000	6.40
E.1	A	2.035	$1\frac{1}{8}$	$\frac{1}{16}$	$\frac{11}{16}$	59	3800	1.50

Conveying DETACHABLE CHAIN Attachments

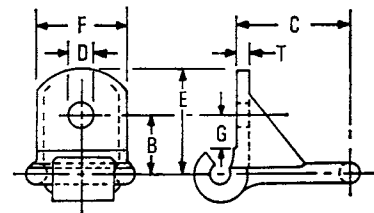
Type A1

Chain Number	Dimensions									Weight
	A	B	C	D†	E	F	G	H	T	
	in	in	in	in	in	in	in	in	in	lb/ft
32	$\frac{7}{8}$	$\frac{5}{8}$	$\frac{3}{32}$	$\frac{1}{16}$	$\frac{3}{4}$	$\frac{1}{16}$	—	—	$\frac{1}{8}$	0.5
42	$1\frac{3}{32}$	$\frac{3}{16}$	$\frac{3}{32}$	$\frac{1}{4}$	$1\frac{1}{8}$	$\frac{1}{2}$	—	—	$\frac{1}{8}$	0.7
45	$1\frac{1}{8}$	$\frac{7}{8}$	$\frac{1}{8}$	$\frac{1}{4}$	$1\frac{1}{16}$	$\frac{1}{16}$	—	—	$\frac{5}{32}$	0.75
51	$\frac{3}{16}$	$\frac{1}{16}$	$\frac{1}{8}$	$\frac{1}{16}$	$\frac{3}{4}$	$\frac{1}{16}$	—	—	$\frac{1}{8}$	0.92
52	$1\frac{3}{16}$	$\frac{3}{16}$	$\frac{1}{8}$	$\frac{1}{4}$	$1\frac{1}{16}$	$\frac{1}{2}$	—	—	$\frac{1}{8}$	1.04
55	$1\frac{1}{8}$	$\frac{7}{8}$	$\frac{1}{8}$	$\frac{1}{4}$	$1\frac{3}{8}$	$\frac{1}{16}$	—	—	$\frac{5}{32}$	0.95
57	$1\frac{1}{2}$	$1\frac{1}{8}$	$\frac{1}{16}$	$\frac{1}{4}$	$1\frac{1}{16}$	$\frac{7}{8}$	—	—	$\frac{3}{16}$	1.55
62	$1\frac{7}{16}$	$\frac{3}{16}$	$\frac{5}{32}$	$\frac{1}{4}$	$1\frac{1}{16}$	$\frac{1}{16}$	—	—	$\frac{1}{16}$	1.5
72	$1\frac{3}{8}$	1	$\frac{3}{32}$	$\frac{3}{8}$	$1\frac{1}{4}$	$\frac{5}{8}$	—	—	$\frac{3}{32}$	2.4
77	$1\frac{1}{16}$	$1\frac{1}{2}$	$\frac{1}{16}$	$\frac{1}{4}$	$1\frac{5}{8}$	$\frac{7}{8}$	—	—	$\frac{3}{32}$	1.89



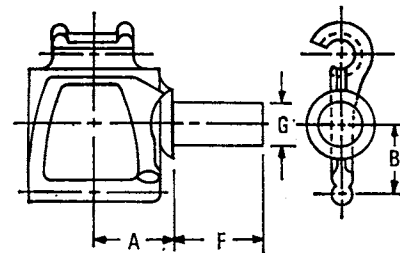
Type C1

Chain Number	Dimensions									Weight
	A	B	C	D†	E	F	G	H	T	
	in	in	in	in	in	in	in	in	in	lb/ft
52	—	$\frac{3}{4}$	$1\frac{3}{32}$	$\frac{1}{4}$	$1\frac{1}{8}$	$1\frac{1}{16}$	$\frac{3}{8}$	—	$\frac{1}{8}$	1.4
55	—	$\frac{1}{16}$	$1\frac{1}{32}$	$\frac{1}{4}$	$1\frac{1}{32}$	$1\frac{1}{16}$	$\frac{1}{2}$	—	$\frac{3}{32}$	1.2
57	—	$\frac{3}{32}$	2	$\frac{1}{4}$	$1\frac{3}{8}$	$1\frac{1}{16}$	$\frac{3}{8}$	—	$\frac{1}{8}$	1.3
88	—	—	$2\frac{1}{16}$	—	$2\frac{1}{16}$	$2\frac{3}{8}$	—	—	$\frac{1}{16}$	4.3



Type D5

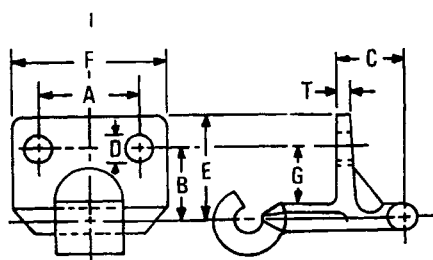
Chain Number	Dimensions									Weight
	A	B	C	D	E	F	G	H	T	
	in	in	in	in	in	in	in	in	in	lb/ft
45	$\frac{3}{4}$	$\frac{7}{8}$	—	—	—	1	$\frac{1}{2}$	—	—	1.1
52	$\frac{3}{16}$	$\frac{3}{4}$	—	—	—	$1\frac{1}{8}$	$\frac{1}{16}$	—	—	1.92
55	$\frac{7}{8}$	$1\frac{3}{8}$	—	—	—	$1\frac{1}{16}$	$\frac{1}{16}$	—	—	1.5
57	$1\frac{1}{16}$	$1\frac{1}{8}$	—	—	—	$1\frac{1}{16}$	$\frac{3}{8}$	—	—	1.68
62	$\frac{7}{8}$	$1\frac{3}{8}$	—	—	—	$1\frac{1}{2}$	$\frac{1}{2}$	—	—	2.1
75	$1\frac{1}{2}$	$1\frac{1}{16}$	—	—	—	$1\frac{1}{16}$	$\frac{7}{8}$	—	—	2.5
78	$1\frac{1}{2}$	$1\frac{1}{16}$	—	—	—	$1\frac{1}{2}$	$\frac{7}{8}$	—	—	3.4



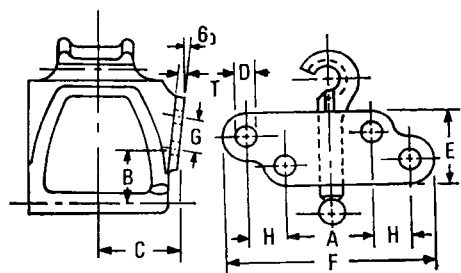
†Bolt diameter

Conveying DETACHABLE CHAIN Attachments

Type F2

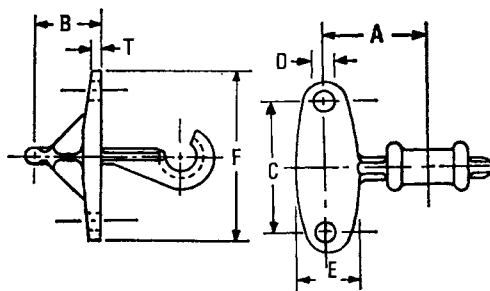


Chain Number	Dimensions									Weight
	A	B	C	D†	E	F	G	H	T	
	in	in	in	in	in	in	in	in	in	lb/ft
52	1 $\frac{1}{8}$	1 $\frac{1}{8}$	$\frac{5}{8}$	$\frac{1}{8}$	1 $\frac{1}{2}$	1 $\frac{1}{8}$	1 $\frac{1}{8}$	—	$\frac{3}{32}$	1.6
55	1 $\frac{1}{8}$	$\frac{3}{16}$	1 $\frac{1}{8}$	$\frac{1}{8}$	1 $\frac{1}{2}$	1 $\frac{1}{8}$	$\frac{5}{8}$	—	$\frac{3}{32}$	1.35
57	1 $\frac{1}{8}$	1 $\frac{1}{8}$	1 $\frac{1}{8}$	$\frac{1}{2}$	1 $\frac{1}{2}$	2 $\frac{1}{8}$	1 $\frac{1}{8}$	—	$\frac{3}{32}$	1.95
67	1 $\frac{1}{8}$	1 $\frac{1}{8}$	1 $\frac{1}{8}$	$\frac{1}{2}$	1 $\frac{3}{8}$	2 $\frac{1}{8}$	$\frac{3}{4}$	—	$\frac{1}{16}$	2.18
75	1 $\frac{1}{8}$	1 $\frac{1}{2}$	1	$\frac{1}{8}$	1 $\frac{3}{8}$	2 $\frac{3}{8}$	$\frac{3}{8}$	—	$\frac{1}{4}$	2.6
77	1 $\frac{1}{2}$	1 $\frac{3}{8}$	1 $\frac{1}{8}$	$\frac{1}{8}$	1 $\frac{1}{8}$	2 $\frac{1}{2}$	1 $\frac{1}{8}$	—	$\frac{1}{4}$	3.11
78	1 $\frac{1}{2}$	1 $\frac{3}{16}$	1 $\frac{1}{8}$	$\frac{1}{8}$	1 $\frac{7}{8}$	2 $\frac{5}{8}$	1	—	$\frac{3}{32}$	3.6
85	3	1 $\frac{1}{8}$	1 $\frac{1}{2}$	$\frac{3}{8}$	2 $\frac{1}{2}$	3 $\frac{1}{8}$	1 $\frac{1}{2}$	—	$\frac{3}{32}$	4.71
88	2	1 $\frac{3}{8}$	1 $\frac{1}{2}$	$\frac{1}{8}$	2	2 $\frac{1}{8}$	$\frac{3}{8}$	—	$\frac{1}{4}$	4.14
103	2 $\frac{1}{2}$	1 $\frac{1}{8}$	1 $\frac{1}{8}$	$\frac{3}{8}$	2 $\frac{3}{8}$	3 $\frac{1}{8}$	1 $\frac{1}{2}$	—	$\frac{3}{32}$	6.1



Type G6

Chain Number	Dimensions									Weight
	A	B	C	D†	E	F	G	H	T	
	in	in	in	in	in	in	in	in	in	lb/ft
77	1 $\frac{1}{2}$	$\frac{7}{8}$	1 $\frac{3}{16}$	1 $\frac{3}{8}$	—	3 $\frac{1}{8}$	$\frac{1}{8}$	—	$\frac{1}{8}$	2.65
78	1 $\frac{1}{2}$	1	1 $\frac{1}{8}$	1 $\frac{3}{8}$	—	3 $\frac{1}{8}$	$\frac{1}{8}$	$\frac{3}{16}$	$\frac{1}{4}$	3.4



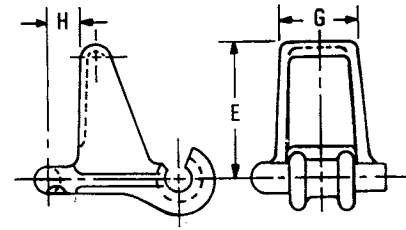
Type G19

Chain Number	Dimensions									Weight
	A	B	C	D†	E	F	G	H	T	
	in	in	in	in	in	in	in	in	in	lb/ft
77	1 $\frac{1}{2}$	1 $\frac{3}{8}$	2 $\frac{5}{8}$	$\frac{1}{2}$	$\frac{5}{8}$	3 $\frac{1}{8}$	—	—	$\frac{1}{8}$	2.8
78	2	1 $\frac{3}{8}$	2 $\frac{5}{8}$	$\frac{1}{8}$	$\frac{5}{8}$	3 $\frac{1}{2}$	—	—	$\frac{1}{4}$	3.35
88	2	1 $\frac{3}{8}$	2 $\frac{5}{8}$	$\frac{1}{8}$	$\frac{5}{8}$	3 $\frac{1}{2}$	—	—	$\frac{1}{4}$	4.3
103	2 $\frac{3}{8}$	1 $\frac{1}{8}$	2 $\frac{7}{8}$	$\frac{3}{8}$	$\frac{3}{4}$	3 $\frac{1}{8}$	—	—	$\frac{1}{4}$	6.15

Conveying DETACHABLE CHAIN Attachments

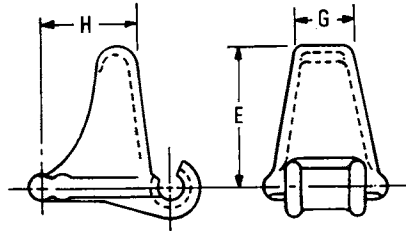
Type H1

Chain Number	Dimensions									Weight
	A	B	C	D	E	F	G	H	T	
	in	in	in	in	in	in	in	in	in	lb/ft
57	—	—	—	—	2 $\frac{7}{8}$	—	1	$\frac{1}{2}$	—	2.0
77	—	—	—	—	2 $\frac{7}{8}$	—	1 $\frac{3}{32}$	$\frac{1}{32}$	—	2.5
78	—	—	—	—	2 $\frac{1}{8}$	—	1 $\frac{7}{8}$	$\frac{5}{8}$	—	3.6
88	—	—	—	—	2 $\frac{3}{8}$	—	1 $\frac{5}{8}$	$\frac{5}{8}$	—	4.13



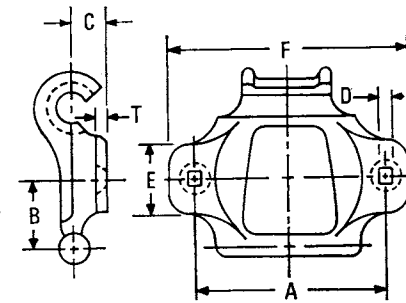
Type H2

Chain Number	Dimensions									Weight
	A	B	C	D	E	F	G	H	T	
	in	in	in	in	in	in	in	in	in	lb/ft
57	—	—	—	—	2 $\frac{7}{8}$	—	1	2	—	1.84
75	—	—	—	—	2 $\frac{7}{8}$	—	1 $\frac{1}{8}$	2 $\frac{3}{32}$	—	2.3



Type K1

Chain Number	Dimensions									Weight
	A	B	C	D†	E	F	G	H	T	
	in	in	in	in	in	in	in	in	in	lb/ft
32	1 $\frac{1}{2}$	$\frac{3}{32}$	$\frac{1}{8}$	$\frac{7}{8}$ ●	$\frac{1}{32}$	2 $\frac{1}{2}$	—	—	$\frac{3}{32}$	0.79
33	1 $\frac{1}{8}$	$\frac{1}{16}$	$\frac{7}{8}$	$\frac{7}{8}$ ○	$\frac{1}{16}$	2 $\frac{1}{8}$	—	—	$\frac{3}{32}$	0.6
34	1 $\frac{1}{16}$	$\frac{3}{32}$	$\frac{7}{8}$	$\frac{7}{8}$ ●	$\frac{3}{32}$	2 $\frac{1}{4}$	—	—	$\frac{1}{8}$	0.74
42	2	$\frac{1}{16}$	$\frac{1}{8}$	$\frac{7}{8}$ ●	$\frac{1}{8}$	2 $\frac{1}{2}$	—	—	$\frac{1}{8}$	0.96
45	2	$\frac{3}{32}$	$\frac{3}{32}$	$\frac{7}{8}$ □	$\frac{3}{32}$	2 $\frac{1}{2}$	—	—	$\frac{1}{8}$	0.9
48	2 $\frac{3}{8}$	1 $\frac{1}{32}$	$\frac{1}{32}$	$\frac{1}{4}$ ○	1 $\frac{7}{8}$	3 $\frac{1}{2}$	—	—	$\frac{5}{32}$	1.38
51	1 $\frac{1}{2}$	$\frac{5}{8}$	$\frac{7}{8}$	$\frac{7}{8}$ ●	$\frac{5}{8}$	2 $\frac{3}{8}$	—	—	$\frac{1}{8}$	1.14
52	2 $\frac{3}{8}$	$\frac{3}{32}$	$\frac{7}{8}$	$\frac{7}{8}$ ●	$\frac{3}{8}$	3 $\frac{1}{2}$	—	—	$\frac{1}{8}$	1.27
55	2	$\frac{3}{32}$	1 $\frac{1}{32}$	$\frac{7}{8}$ ○	$\frac{3}{8}$	2 $\frac{1}{2}$	—	—	$\frac{1}{8}$	1.1
57	3	1 $\frac{1}{8}$	$\frac{5}{8}$	$\frac{1}{4}$ ○	1 $\frac{3}{32}$	3 $\frac{3}{8}$	—	—	$\frac{1}{8}$	1.5
62	2 $\frac{3}{8}$	$\frac{3}{32}$	$\frac{1}{32}$	$\frac{1}{4}$ ●	$\frac{1}{16}$	3 $\frac{1}{2}$	—	—	$\frac{3}{32}$	1.69
67	3	1 $\frac{7}{8}$	$\frac{1}{16}$	$\frac{1}{4}$ ●	1 $\frac{1}{32}$	4	—	—	$\frac{3}{32}$	1.9
72 $\frac{1}{2}$	3	$\frac{1}{16}$	$\frac{7}{8}$	$\frac{7}{8}$ □	$\frac{3}{8}$	4	—	—	$\frac{1}{8}$	3.1
75	2 $\frac{1}{16}$	1 $\frac{7}{8}$	$\frac{1}{8}$	$\frac{1}{4}$ ■	1 $\frac{7}{8}$	3 $\frac{1}{16}$	—	—	$\frac{3}{32}$	1.85
77	3	1 $\frac{1}{8}$	$\frac{3}{32}$	$\frac{1}{4}$ ■	1 $\frac{3}{32}$	3 $\frac{7}{8}$	—	—	$\frac{3}{32}$	2.13

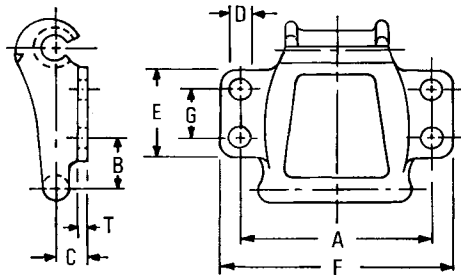


Conveying DETACHABLE CHAIN Attachments

Type K1 *continued*

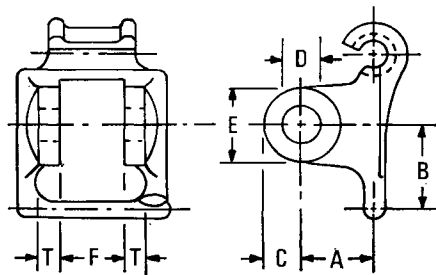
Chain Number	Dimensions									Weight
	A	B	C	D†	E	F	G	H	T	
	in	in	in	in	in	in	in	in	in	lb/ft
78	3 $\frac{3}{8}$	1 $\frac{1}{2}$	$\frac{5}{8}$	$\frac{1}{2}$ ■	1 $\frac{3}{8}$	4 $\frac{7}{8}$	—	—	$\frac{3}{32}$	2.5
88	3 $\frac{13}{16}$	1 $\frac{1}{2}$	$\frac{3}{4}$	$\frac{7}{8}$ □	1 $\frac{3}{8}$	4 $\frac{1}{2}$	—	—	$\frac{3}{8}$	3.35
103	4 $\frac{3}{8}$	1 $\frac{1}{2}$	$\frac{7}{8}$	$\frac{3}{8}$ ●	1 $\frac{33}{32}$	5 $\frac{3}{8}$	—	—	$\frac{1}{2}$	5.2

Type K2



Chain Number	Dimensions									Weight
	A	B	C	D†	E	F	G	H	T	
	in	in	in	in	in	in	in	in	in	lb/ft
77	3	$\frac{3}{4}$	$\frac{3}{4}$	$\frac{1}{2}$ ○	1 $\frac{1}{8}$	4	$\frac{1}{8}$	—	$\frac{1}{8}$	2.33
85	5 $\frac{3}{8}$	1 $\frac{1}{8}$	$\frac{1}{8}$	$\frac{3}{8}$ ○	2 $\frac{1}{8}$	6 $\frac{3}{8}$	1 $\frac{1}{2}$	—	$\frac{3}{8}$	3.79
95	5 $\frac{3}{8}$	1 $\frac{1}{8}$	$\frac{1}{8}$	$\frac{3}{8}$ ○	2 $\frac{1}{8}$	6 $\frac{3}{8}$	1 $\frac{1}{2}$	—	$\frac{3}{32}$	4.65
103	4 $\frac{1}{2}$	$\frac{1}{8}$	$\frac{1}{8}$	$\frac{1}{2}$ ○	2 $\frac{1}{8}$	5 $\frac{1}{2}$	1 $\frac{1}{2}$	—	$\frac{1}{8}$	5.54
108	6 $\frac{1}{2}$	1 $\frac{3}{32}$	$\frac{3}{8}$	$\frac{3}{8}$ ○	3 $\frac{1}{8}$	7 $\frac{1}{2}$	2 $\frac{1}{8}$	—	$\frac{3}{32}$	5.57
114	4 $\frac{1}{2}$	$\frac{1}{8}$	$\frac{1}{8}$	$\frac{1}{2}$ ○	2 $\frac{1}{2}$	5 $\frac{3}{8}$	1 $\frac{1}{2}$	—	$\frac{1}{32}$	7.7
124	5 $\frac{1}{2}$	1 $\frac{1}{2}$	1 $\frac{1}{8}$	$\frac{3}{8}$ ○	3 $\frac{1}{2}$	6 $\frac{1}{2}$	1 $\frac{1}{8}$	—	$\frac{3}{32}$	10.08

Type M3



Chain Number	Dimensions									Weight
	A	B	C	D	E	F	G	H	T	
	in	in	in	in	in	in	in	in	in	lb/ft
83	1 $\frac{1}{8}$	2	$\frac{1}{8}$	□	1 $\frac{3}{8}$	1	—	—	$\frac{7}{8}$	3.8